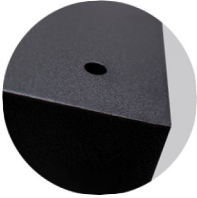
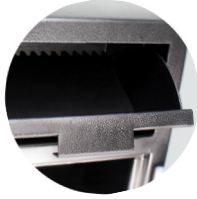


# MFL3020KKE

## MFL SERIES CASH MANAGEMENT SAFES



### MFL3020KKE

#### EXTERIOR [HWD]

30" x 20" x 20"

#### INTERIOR [HWD]

T: 8½" x 19¾" x 17⅛"

B: 10¼" x 19¾" x 17⅛"

#### INTERIOR [CU.FT.]

3.6

#### WEIGHT

184 lbs

### SAFE FEATURES

#### BODY

- All steel construction
- 4 pre-drilled anchor holes [anchor kit included]
- Equipped with 2 compartments:
  - 1 Top compartment stores deposits
  - 2 Bottom compartment has no access to the deposit area

#### LOCK

##### TOP DOOR

- 2-Key Entry System

##### BOTTOM DOOR

- Battery operated [battery included]
- 1 Manager Code & 5 User codes
- Multiple invalid code defense feature
- Low Battery Warning

#### DOOR

- Door has an overall thickness of ½"
- 6 massive 1" diameter solid steel bolts total
- Heavy-duty solid steel hinges
- Full length solid steel dead bar
- Lock protected by a drill resistant hard plate & punch activated relocking system

#### DEPOSIT DOOR

- Front-Loading mail box style deposit door
- Anti-Fish baffle helps prevent fishing through the deposit door

2-TONE GRAY/BLACK

**MESA**  
SAFE COMPANY